



Styletto IX

User Guide



Made for

 iPhone | iPad | iPod

Content

Welcome	4
Intended use / Intended purpose	5
Your hearing aids	6
Hearing aid type	6
Getting to know your hearing aids	7
Components and names	7
Hearing programs	8
Features	9
Daily use	10
Charging	10
Low power indication	10
Turning on and off hearing aids	11
Switching to standby mode	12
Inserting and removing the hearing aids	13
Adjusting the volume	18
Changing the hearing program	19
Special listening situations	20
On the phone	20
Bluetooth	20
Pairing a Bluetooth device with your hearing aids	21

Maintenance and care	22
Hearing aids	22
Ear pieces	24
Professional maintenance	25
Important safety information	26
Safety information on lithium-ion rechargeable batteries	26
Further information	29
Accessories	29
Operating, transport, and storage conditions	29
Disposal information	31
Explanation of symbols	31
Troubleshooting for hearing aids	32
Country-specific information	33
Service and warranty	35

Welcome

Thank you for choosing our hearing aids to accompany you through everyday life. Like anything new, it may take you a little time to become familiar with them.

This guide, along with support from your Hearing Care Professional, will help you understand the advantages and greater quality of life your hearing aids offer.

To receive the most benefit from your hearing aids, it is recommended that you wear them every day, all day. This will help you get adjusted to them.



CAUTION

It is important to read this user guide and the safety manual thoroughly and completely. Follow the safety information to avoid damage or injury.



Before using your hearing aids for the first time, fully charge them.



The device may not look exactly like the guiding illustrations in these instructions. We reserve the right to make any changes we consider necessary.

Intended use / Intended purpose

Hearing aids are intended to improve the hearing of hearing impaired persons. Diagnosis and prescription of a hearing aid must be performed by hearing health specialists, e.g. acousticians, audiologists or ENT doctors.

Use the hearing aids and accessories only as described in the respective user guides.

Your hearing aids



This user guide describes optional features that your hearing aids may or may not have.

Ask your Hearing Care Professional to indicate the features that are valid for your hearing aids.

Hearing aid type

Your hearing aids are a RIC (Receiver-in-Canal) model. The receiver is placed within the ear canal and connected to the hearing aid via a receiver cable. The hearing aids are not intended for children under the age of 3 years or persons with a developmental age of under 3 years.

Your hearing aids feature Bluetooth® Low Energy* technology allowing for easy data exchange with your smartphone, and for seamless audio streaming with your iPhone** and for some Android smartphones that support Audio Streaming for Hearing Aids (ASHA) or Bluetooth LE Audio*.

A power cell (lithium-ion rechargeable battery) is permanently built into your hearing aid. This enables easy charging with Styletto IX Charger or D&C Charger slimRIC.

* The Bluetooth word mark and logos are owned by the Bluetooth SIG, Inc., and any use of such marks by WS Audiology Denmark A/S of this product is under licenses. Other trademarks and trade names are those of their respective owners.

** iPad, iPhone, and iPod touch are trademarks of Apple Inc., registered in the U.S. and other countries.

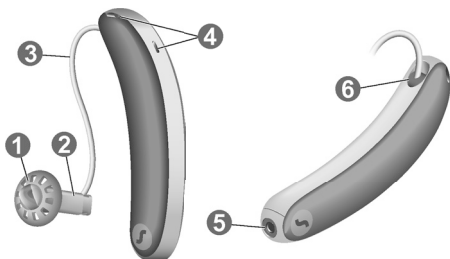
The wireless functionality enables advanced audiological features and synchronization between your two hearing aids.

Getting to know your hearing aids

Your hearing aids have no controls.




If you want to adjust the volume or switch hearing programs manually, you can ask your Hearing Care Professional about a remote control option.

Components and names



-
- | | |
|------------------|--|
| ① Ear piece | ④ Microphone openings |
| ② Receiver | ⑤ Charging contact |
| ③ Receiver cable | ⑥ Side indicator (red = right,
blue = left) |
-

You can use the following standard ear pieces:

Standard ear pieces	Size
<input type="radio"/>  Sleeve 3.0 Vented/Closed/ Power	
<input type="radio"/>  Eartip 3.0 Open	
<input type="radio"/>  Eartip 3.0 Tulip	

You can easily exchange the standard ear pieces. Read more in section "Maintenance and care".

Hearing programs

1

2

3

4

5

6

Read more in section "Changing the hearing program".

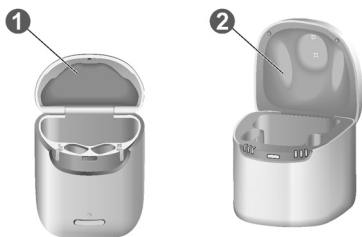
Features

- ☐ **Power-on delay** enables whistle-free insertion of hearing aids.
Read more in section "Turning on and off".
- ☐ The **tinnitus therapy feature** generates a sound to distract you from your tinnitus.

Daily use

Charging

You have the choice between Styletto IX Charger ① and D&C Charger *slimRIC* ②.



- Place the hearing aids in the charger.
- Follow the instructions in the charger's user guide. You can also find useful tips for charging in the charger's user guide.

Low power indication

You will hear an alert signal to indicate the power cell is running low. The signal will be repeated every 15 to 30 minutes depending on your settings. Depending on the usage of your hearing aids, you have approximately 1.5 hours to charge your hearing aids. Shortly before the hearing aids will stop working, the alert signal will be repeated every 1 to 7 minutes depending on your settings.

Note that the power cell runtime is reduced if too many features are used simultaneously.

Turning on and off hearing aids

You have the following options to turn your hearing aids on or off.

- ▶ Turning on: Take the aids out of the charger.
The startup melody is played in your hearing aids. The **default** volume and hearing program are set.
- ▶ Turning off: Place the hearing aids in the charger.

Note that the charger must be on.

With power-on delay activated, the hearing aids turn on after a delay of several seconds. During this time you can insert the hearing aids into your ears without experiencing unpleasant feedback whistling.

The "power-on delay" can be configured by your Hearing Care Professional.

Switching to standby mode

Via remote control, you can switch your hearing aids to standby mode. This mutes the hearing aids. When you leave standby mode, the **previously** used volume and hearing program are set.

Note:

- In standby mode, the hearing aids are **not** turned off completely. They draw some power.

Therefore we recommend to use standby mode only for a short period of time.

- If you want to leave standby mode, but the remote control is not at hand: Turn your hearing aids off and on again (by shortly placing them in the charger until one or more LEDs light up). Wait until the startup melody is played in your hearing aids. This may take several seconds. Note that the **default** volume and hearing program are set.

Inserting and removing the hearing aids

Your hearing aids have been fine-tuned for your right and left ear. Colored markers indicate the side:

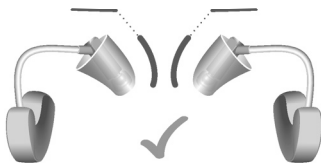
- red marker = right ear
- blue marker = left ear



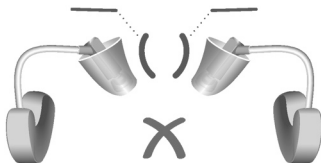
Inserting a hearing aid:

- For Sleeves, take care that the bend of the Sleeve is in line with the bend of the receiver cable.

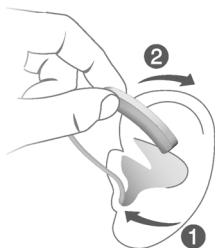
Correct:



Incorrect:



- ▶ Hold the receiver cable at the bend closer to the ear piece.
- ▶ Carefully push the ear piece in the ear canal ❶.
- ▶ Twist it slightly until it sits well.
Open and close your mouth to avoid accumulation of air in the ear canal.
- ▶ Lift the hearing aid and slide it over the top of your ear ❷.



i

- It may be helpful to insert the **right** hearing aid with the **right** hand and the **left** hearing aid with the **left** hand.
- If you have problems inserting the ear piece, use the other hand to gently pull your earlobe downwards. This opens the ear canal and eases insertion of the ear piece.

The optional retention strand helps to securely retain the ear piece in your ear. To attach the optional retention strand:

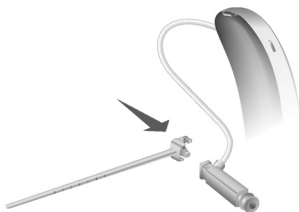
Concha Lock Sleeve 3.0

- Align the Concha Lock Sleeve 3.0 with the receiver as shown in the picture. Then slide the Concha Lock Sleeve 3.0 over the receiver so that it fits securely.



Concha Lock 3.0

- Align the end of the *retention strand* with the flat end of the receiver.



- Then press the retention strand towards the receiver until it clicks into place.



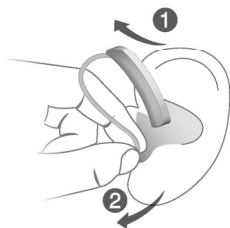
To position the retention strand:

- Bend the retention strand and position it carefully into the bottom of the bowl of your ear (refer to the picture).



Removing a hearing aid:

- Lift the hearing aid and slide it over the top of your ear ❶.



- Grip the receiver in the ear canal with two fingers and pull it carefully out ❷.

Do not pull the receiver cable.

Clean and dry your hearing aids after usage. Read more in section "Maintenance and care".

Adjusting the volume

Your hearing aids automatically adjust the volume to the listening situation.

- ▶ If you prefer manual volume adjustment, use a remote control option.

An optional signal can indicate the volume change.

Changing the hearing program

Depending on the listening situation, your hearing aids automatically adjust their sound.

Your hearing aids may also have several hearing programs which allow you to change the sound, if needed. An optional signal tone can indicate the program change.

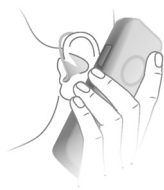
- To change the hearing program manually, use a remote control option.
Refer to section "Hearing programs" for a list of your hearing programs.

The default volume is applied.

Special listening situations

On the phone

When you are on the phone, hold the telephone receiver slightly above your ear. The hearing aid and telephone receiver have to be aligned. Turn the receiver slightly so that the ear is not completely covered.



Telephone program

You may prefer a certain volume when using the phone. Ask your Hearing Care Professional to configure a telephone program.

- Switch to the telephone program whenever you are on the phone.

If a telephone program is configured for your hearing aids, it is listed in section "Hearing programs".

Bluetooth

Your hearing aids can connect with compatible Bluetooth® devices such as phones, tablets, and computers. This allows you to use your hearing aids for phone calls, to listen to podcasts and music, and so on.

In situations such as travelling on aircraft, the use of Bluetooth devices might be prohibited. In this case, your hearing aid's Bluetooth functionality can be switched-off in the smartphone app.

Pairing a Bluetooth device with your hearing aids

The Bluetooth pairing procedure depends on your Bluetooth device. Please refer to the instructions of your device for further details.



- After switching-on your hearing aids, you must complete the pairing within 3 minutes. If pairing takes longer than 3 minutes, simply switch-off your hearing aids, wait 2 seconds, and switch-on again. Now restart the pairing procedure on your Bluetooth device.

Maintenance and care

To prevent damage it is important that you take care of your hearing aids and follow a few basic rules, which will soon become a part of your daily routine.

Hearing aids

Cleaning

Your hearing aids have a protective coating. However, if not cleaned regularly, you may damage the hearing aids or cause personal injury.

- ▶ Clean your hearing aids daily with a soft, dry tissue.
- ▶ Never use running water or immerse the devices in water.
- ▶ Never apply pressure while cleaning.
- ▶ Do not use alcoholic solvent on the charging contacts.
- ▶ To avoid corrosion, use a soft and dry tissue to wipe off sweat or liquid from the charging contacts or hearing aids before inserting them in the charger.
- ▶ Ask your Hearing Care Professional for recommended cleaning products, special care sets, or more information on how to keep your hearing aids in good condition.



Drying

Use conventional products to dry your hearing aids or our D&C Charger slimRIC. Ask your Hearing Care Professional for recommended drying products and for individual instructions on when to dry your hearing aids.

Storage

- Short-term storage (up to several days): Turn off your hearing aids by placing them in the charger.

The charger must be on. If the charger is not on and you place your hearing aids in the charger, the hearing aids are **not** turned off.

Note that when you turn off the hearing aids via a remote control or smartphone app, the hearing aids are **not** turned off completely. They are in standby mode and still draw some power.

- Long-term storage (weeks, months, ...): First, fully charge your hearing aids. Leave them in the Styletto IX Charger with the lid closed. Once the hearing aids are fully charged, the charger and the hearing aids go into hibernate mode to save power.

We recommend using drying products while storing the hearing aids.

At 6 month intervals you will have to charge the hearing aids to avoid an unrecoverable deep-discharge of the power cell. Deep-discharged power cells cannot be charged anymore and they

have to be replaced. We recommend recharging more frequently than 6 month intervals.

Observe the storage conditions in section "Operating, transport and storage conditions".

Ear pieces

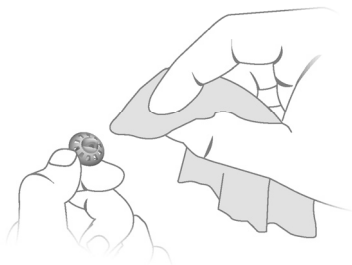
Cleaning

Cerumen (ear wax) may accumulate on the ear pieces. This may affect sound quality. Clean the ear pieces daily.

For all types of ear pieces:

- Clean the ear piece right after removal with a soft and dry tissue.

This prevents that cerumen becomes dry and hard.



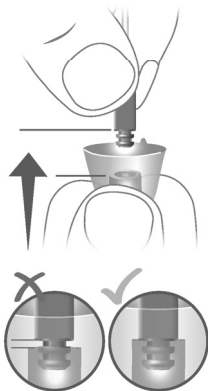
Exchanging

Exchange standard ear pieces approximately every three months. Replace them sooner if you notice cracks or other changes. The procedure for exchanging standard ear pieces depends on the type of ear piece. In section "Components and names", your Hearing Care Professional has marked your type of ear piece.

- To remove the old Eartip or Sleeve, follow the illustration below. Be careful not to pull the receiver cable.



- Take particular care that the new Eartip or Sleeve covers the retention rings of the receiver fully.
- Check the firm fit of the new Eartip or Sleeve.



Professional maintenance

Your Hearing Care Professional can perform a thorough professional cleaning and maintenance.

Ask your Hearing Care Professional for your individual recommendation of maintenance intervals and for support.

Important safety information

Safety information on lithium-ion rechargeable batteries



WARNING

A lithium-ion rechargeable battery is permanently built into your device. Incorrect use of the device can cause the lithium-ion rechargeable battery to burst.

Risk of injury, fire or explosion!

- ▶ Follow the safety instructions for lithium-ion rechargeable battery in this section.



WARNING

Risk of electric shock!

- ▶ Connect the charger only with a USB power supply which complies with IEC 60950-1 and/or IEC 62368-1.



WARNING

- ▶ Observe the operating conditions.
- ▶ Pay special attention to protect your device from extreme heat (e.g. fire, microwave oven, induction oven or other high induction fields) and sunlight.
- ▶ Charge your hearing aids only with an approved charger. Ask your Hearing Care Professional for support.
- ▶ Do not disassemble the device.
- ▶ Do not use the device in explosive atmospheres.
- ▶ Do not use devices that are deformed or obviously damaged.
- ▶ Do not use the device when its performance after charging reduces considerably. Return the device to your Hearing Care Professional.
- ▶ Do not dispose of the device in fire or water.



WARNING

Replacement and repair have to be performed by a professional. Therefore:

- ▶ Do not repair or replace the lithium-ion rechargeable battery yourself.
- ▶ In the unlikely event of a lithium-ion rechargeable battery bursting or exploding, keep all combustible materials away.

In any of the above cases, return your device to the Hearing Care Professional.

For more safety information, refer to the safety manual supplied with the device.

Further information

Accessories

The type of available accessories depends on the hearing aid type. Examples are: a remote control, an audio streaming device, or a smartphone app for remote control.

Consult your Hearing Care Professional for further information.

Operating, transport, and storage conditions

The device operates in the following environmental conditions (also valid in between uses):

Operating conditions	Discharging	Charging
Temperature	0-50°C 32-122°F	10-35°C 50-95°F
Relative humidity	5-93%	20-75%
Atmospheric pressure	700- 1060 hPa	700- 1060 hPa

During extended periods of transport and storage, please observe the following conditions:

	Storage	Transport
Temperature (recommended)	10-25°C 50-77°F	-20-60°C -4-140°F
Temperature (maximum range)	10-40°C 50-104°F	-20-60°C -4-140°F
Relative humidity (recommended)	20-80%	5-90%
Relative humidity (maximum range)	10-80%	5-90%
Atmospheric pressure	700-1060 hPa	700-1060 hPa

Note that you have to charge the device at least every 6 months. We recommend to charge the device every 3 months. For details refer to section "Maintenance and care".

For other parts, such as the charger, other conditions may apply.



WARNING

Risk of injury, fire or explosion during shipment.

- Ship lithium batteries and hearing aids according to local regulations.

Disposal information

- ▶ To avoid environmental pollution, do not throw power cells or hearing aids into household trash.
- ▶ Recycle or dispose of power cells or hearing aids according to local regulations.

Explanation of symbols

Symbols used in our user guides



Points out a situation that could lead to serious, moderate, or minor injuries.



Indicates possible property damage.



Advice and tips on how to handle your device better.



Frequently asked question.



CE compliance label, confirms compliance with certain European Directives, refer to section "Conformance information".



Indicates the legal manufacturer of the device.

Made for



iPhone | iPad | iPod

"Made for iPhone", "Made for iPad", and "Made for iPod" mean that an electronic accessory has been designed to connect specifically to iPhone, iPad, or iPod, respectively, and has been certified by the developer to meet Apple performance standards. Apple is not responsible for the operation of this device or its

compliance with safety and regulatory standards. Please note that the use of this accessory with iPhone, iPad, or iPod may affect wireless performance.

Troubleshooting for hearing aids

Problem and possible solutions

Sound is weak.

- Increase the volume.
 - Charge the hearing aid.
 - Clean or exchange the ear piece.
-

Hearing aid emits whistling sounds.

- Reinsert the ear piece until it fits securely.
 - Decrease the volume.
 - Clean or exchange the ear piece.
-

Sound is distorted.

- Decrease the volume.
 - Charge the hearing aid.
 - Clean or exchange the ear piece.
-

Hearing aid emits signal tones.

- Charge the hearing aid.
-

Hearing aid does not work.

- Turn the hearing aid on.
 - Charge the hearing aid. Observe also the status LEDs on the charger.
-

Consult your Hearing Care Professional if you encounter further problems.

Country-specific information

USA and Canada

Certification information for hearing aids with wireless functionality:

Styletto IX:

- HVIN: RFM004
- Contains FCC ID: 2AXDT-RFM004
- Contains IC ID: 26428-RFM004

Service and warranty

Serial numbers	Hearing aid	Receiver unit
----------------	-------------	---------------

Left:		
-------	--	--

Right:		
--------	--	--

Service dates

1:	4:
----	----

2:	5:
----	----

3:	6:
----	----

Warranty

Date of purchase:

Warranty period in months:

Your Hearing Care Professional



WSAUD A/S

Nymøllevej 6

3540 Lyngø

Denmark

Document No. 05575-99T01-7600 EN

Order/Item No. 210 353 84

Master Rev01, 11.2023

www.wsaud.com

© 01.2024, WSAUD A/S. All rights reserved



www.signia.net